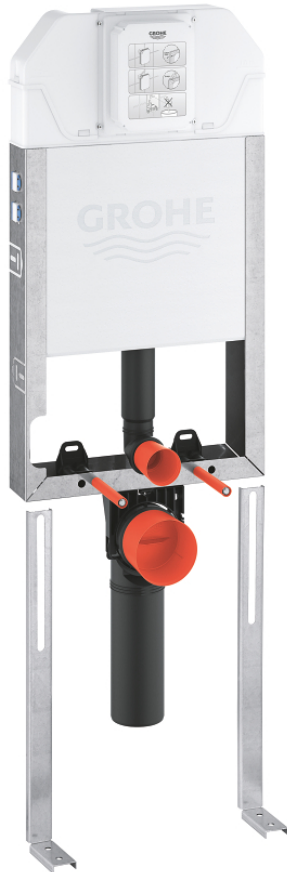


39 840 000 UNISSET SLIM ELEMENT FOR WC WITH FLUSHING CISTERN 88.9 MM



PRODUCT DESCRIPTION

- inlet and outlet connecting set
- angle valve 15 mm (½")
- 2 WC fixing bolts
- distance of fixing bolts 180/230 mm
- Shortable inspection shaft incl. protection during construction phase
- for vertical use
- for mounting of small flush plates revision shaft 40 949 000 to be ordered separately
- flushing cistern SLIM, 3 - 6 l, containing following features:
 - adjustment ex factory 6 l and 3 l
 - pneumatic discharge valve offering 3 modes of operation: dual flush or start/stop or single flush
 - water supply from top
- for on-the-wall installation wall brackets 39 699 000 need to be ordered separately
- support feet (37 304 000)

