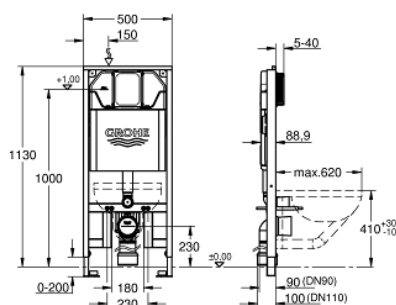


## 39 687 000 **RAPID SL SLIM ELEMENT FOR WC WITH FLUSHING CISTERN 88.9 MM, 1.13 M INSTALLATION HEIGHT**



### PRODUCT DESCRIPTION (1/2)

- for on-the-wall installations or studded walls
- powder coated steel frame, self-supporting
- for dry-cladding, completely pre-assembled
- with fixed connections
- 2 WC fixing bolts
- distance of fixing bolts 180/230 mm
- outlet bend Ø 90 mm
- depth adjustable
- reducer Ø 90/110 mm
- inlet and outlet connecting set
- flushing cistern SLIM, 3 - 6 l, containing following features:
  - adjustment ex factory 6 l and 3 l
  - pneumatic discharge valve offering 3 modes of operation: dual flush or start/stop or single flush
- water supply from top
- insulated against condensation
- 1/2" water supply connection including integrated angle valve and push fit flexible hose union
- Shortable inspection shaft incl. protection during construction phase, for vertical use

## 39 687 000 **RAPID SL SLIM ELEMENT FOR WC WITH FLUSHING CISTERN 88.9 MM, 1.13 M INSTALLATION HEIGHT**

### PRODUCT DESCRIPTION (2/2)

- for on-the-wall installation wall brackets 39 699 000 need to be ordered separately
- for mounting of small flush plates revision shaft 40 949 000 to be ordered separately