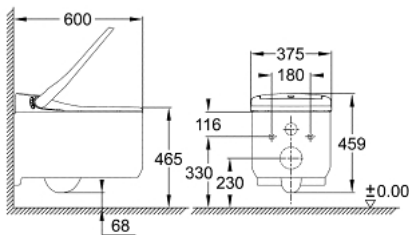


39 354 SH1 GROHE SENSA ARENA SMART TOILET FOR CONCEALED FLUSHING CISTERNS, WALL-HUNG



PRODUCT DESCRIPTION (1/2)

- Colour: alpine white
- GROHE Hygiene Clean: with antibacterial glazing HyperClean (SIAA Kokin Japanese standard compliant) and non-stick coating AquaCeramic
- GROHE Power Flush: rimless wash down with GROHE Triple Vortex flushing
- GROHE Skin Clean:
 - 2 dedicated adjustable spray arms (1 for anal area, 1 for front spray)
 - separate water way for front spray
 - oscillating spray (automatic forward and reverse motion of the spray)
 - pulsating spray for massage
 - adjustable spray intensity
 - automatic pre- and post-rinsing of spray nozzle with fresh water
 - integrated instant heater provides unlimited warm water
 - adjustable temperature
 - warm air dryer with adjustable temperature
- PlasmaCluster function - ion technology
- descaling function
- Duroplast WC seat and lid with automatic opening/close function
- infra-red user detection
- inside bowl night light
- hidden water supply and power supply connections
- smart phone app for iOS and Android
- manual remote controller with wall-mounted holder
- active carbon filter for odour absorption
- water supply connection set for concealed cistern
- nominal voltage 220-240 V AC
- main frequency 50-60 Hz
- type of protection IPX4
- complies with EN 1717

Pure Freude
an Wasser

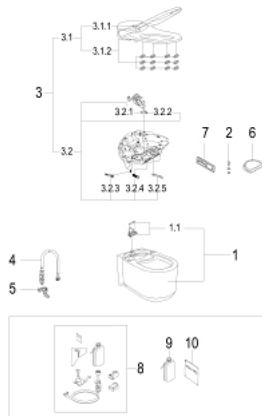


39 354 SH1 GROHE SENSIA ARENA SMART TOILET FOR CONCEALED FLUSHING CISTERNS, WALL-HUNG

PRODUCT DESCRIPTION (2/2)

- CE approved
- recommended in combination with a GROHE Rapid SLX element (1,13 m installation height)

39 354 SH1 GROHE SENSA ARENA SMART TOILET FOR CONCEALED FLUSHING CISTERNS, WALL-HUNG



SPARE PARTS, August 2017 – now

- 1: WC-ceramic (Spare part-nr. 14937000)
 - 1.1: Fixing member rear (Spare part-nr. 14969000)
 - 2: Anti-theft screw (Spare part-nr. 14972000)
 - 3: E-bidet unit (Spare part-nr. 14976000)
 - 3.1: Cover (Spare part-nr. 14979000)
 - 3.1.1: WC lid (Spare part-nr. 14925SH0)
 - 3.1.2: WC seat (Spare part-nr. 14924SH0)
 - 3.2: Base plate assembly (Spare part-nr. 14978000)
 - 3.2.1: Spray (Spare part-nr. 14929000)
 - 3.2.2: Spray (Spare part-nr. 14928000)
 - 3.2.3: Filter (Spare part-nr. 14927000)
 - 3.2.4: Air filter (Spare part-nr. 14933000)
 - 3.2.5: Nozzle guard (Spare part-nr. 14930000)
 - 4: Connection hose assembly (Spare part-nr. 14974000)
 - 5: Hose clip (Spare part-nr. 14971000)
 - 6: splash protection (Spare part-nr. 14936000)
 - 7: Remote control (Spare part-nr. 14926001)
 - 7: Remote control (Spare part-nr. 14926002)
 - 8: Descaling kit (Spare part-nr. 46978001)*
 - 9: Descaler bottle (Spare part-nr. 46979000)*
 - 10: Descaler for shower toilet (Spare part-nr. 4697700M)*
- * Optional accessories