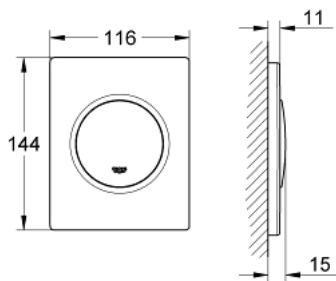


38 804 000 **NOVA COSMOPOLITAN ACTUATION PLATE**

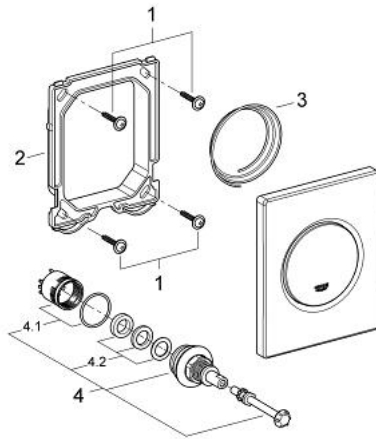


PRODUCT DESCRIPTION

- Colour: chrome
- manual activation for urinal
- set for final installation
- for Rapido U or Rapido UMB
- 116 x 144 mm
- mechanical functional cartridge
- flow pressure min 0.5 bar
- operating pressure max 6 bar
- 1.0 - 6.0 adjustable
- GROHE Long-Life finish



38 804 000 **NOVA COSMOPOLITAN ACTUATION PLATE**



SPARE PARTS, August 2012 – now

- 1: Screw (Spare part-nr. 6636200M)
- 2: Mounting frame (Spare part-nr. 66845000)
- 3: Spring, 5 pcs. (Spare part-nr. 4309700M)
- 4: Cartridge (Spare part-nr. 42354000)
- 4.1: Seal kit (Spare part-nr. 4271500M)
- 4.2: Rings (Spare part-nr. 4282000M)