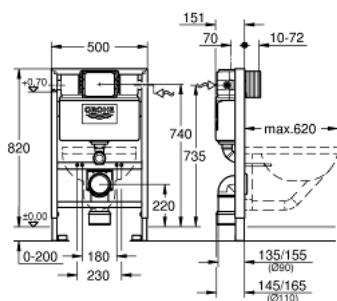


## 38 526 00F **RAPID SL ELEMENT FOR WC, 0.82 M INSTALLATION HEIGHT**



### PRODUCT DESCRIPTION (1/2)

- with flushing cistern GD 2, 3 - 4.5 l
- for on-the-wall installations or studded walls
- powder coated steel frame, self-supporting
- for dry-cladding, completely pre-assembled
- with fixed connections
- TÜV approved
- 2 WC fixing bolts
- distance of fixing bolts 180/230 mm
- PP outlet bend Ø 90 mm
- depth adjustable
- reducer Ø 90/110 mm
- inlet and outlet connecting set
- flushing cistern GD 2, 3 - 4.5 l, containing following features:
  - flushing cistern containing the following features:
    - pneumatic discharge valve offering 3 modes of operation: dual flush or start/stop or single flush
- front or top actuation
- water supply from left/right or back
- low noise (group I acc. to German Noise Specification)
- insulated against condensation
- "water supply connection including integrated angle valve and push fit flexible hose union
- Shortable inspection shaft incl. protection during construction phase



Pure Freude  
an Wasser



## 38 526 00F **RAPID SL ELEMENT FOR WC, 0.82 M INSTALLATION HEIGHT**

### **PRODUCT DESCRIPTION** (2/2)

- for on-the-wall installation 38 558 00M needs to be ordered separately
- for mounting of small flush plates please order revision shaft 40 950 000 (sold separately)