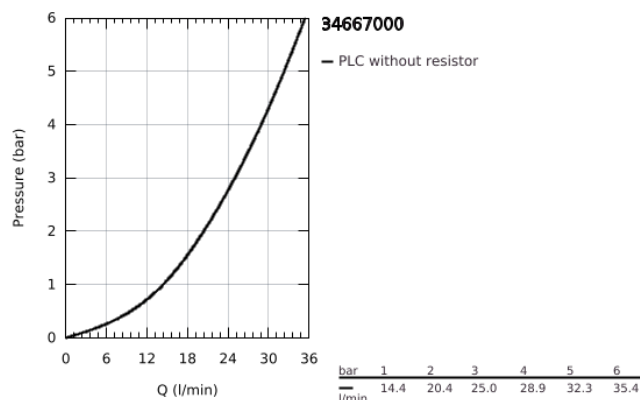
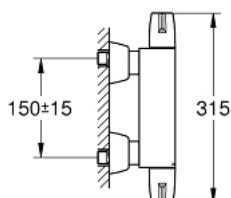
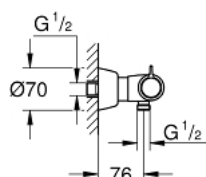


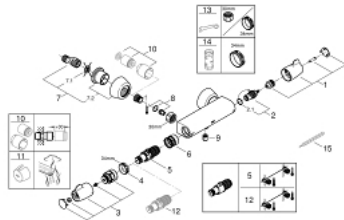
34 667 000 GROHTHERM SPECIAL SHOWER SAFETY MIXER



PRODUCT DESCRIPTION

- Colour: chrome
- wall mounted
- ergonomic handles
- ceramic headparts 1/2", 90°
- GROHE TurboStat compact cartridge
- temperature scale handle with internal safety stop between 35°C and 43°C
- easy thermal disinfection via optional key 47 994 000
- integrated stop valve
- shower bottom outlet with integrated non return-valve
- dirt strainers
- with S-unions and with covers
- GROHE FastFixation for fast exchange of non return valves in connections
- 100% GROHE CoolTouch safety housing with CoolTouch escutcheons
- GROHE Long-Life finish
- GROHE SafetyPlus fixed temperature stop

34 667 000 GROHTHERM SPECIAL SHOWER SAFETY MIXER



SPARE PARTS, July 2015 – now

- 1: Shut-off handle (Spare part-nr. 49006000)
- 2: Ceramic headpart, 1/2" (Spare part-nr. 45882000)
- 2.1: O-ring Ø18,2 x Ø1,7 (Spare part-nr. 0392400M)
- 3: Temperature control handle (Spare part-nr. 49005000)
- 4: Fitting ring (Spare part-nr. 47743000)
- 5: Thermostatic compact cartridge 1/2" (Spare part-nr. 47439000)
- 6: Race (Spare part-nr. 47975000)
- 7: S-union (Spare part-nr. 12058000)
- 7.1: Seal (Spare part-nr. 0138600M)
- 7.2: Covering escutcheon (Spare part-nr. 45545000)
- 8: Replacement set for GROHE QuickFix (Spare part-nr. 47979000)
- 9: Non-return valve (Spare part-nr. 08565000)
- 10: Extension set 1/2", 30 mm (Spare part-nr. 46238000)*
- 11: Temperature unlocking handle (Spare part-nr. 47994000)*
- 12: GROHE TurboStat cartridge 1/2" (Spare part-nr. 47175000)*
- 13: Special spanner (Spare part-nr. 19377000)*
- 14: Socket Spanner (Spare part-nr. 19332000)*
- 15: Adjusting Thermometer (°C) (Spare part-nr. 19001000)*

* Optional accessories