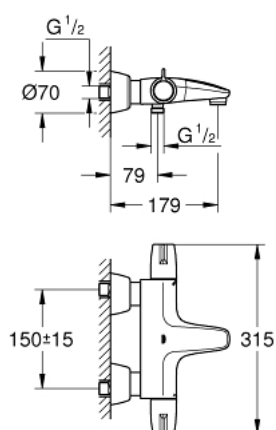


34 665 000 GROHTHERM SPECIAL BATH SAFETY MIXER



PRODUCT DESCRIPTION (1/2)

- Colour: chrome
- wall mounted
- ergonomic handles
- Aquadimmer handle with multiple function
- flow control
- integrated stop valve
- diverter bath/shower
- GROHE TurboStat compact cartridge
- temperature scale handle with internal safety stop between 35°C and 43°C
- easy thermal disinfection via optional key 47 994 000
- shower bottom outlet with integrated non return-valve
- laminar mousseur
- dirt strainers
- with S-unions and with covers
- GROHE FastFixation for fast exchange of non return valves in connections
- 100% GROHE CoolTouch safety housing with CoolTouch escutcheons
- GROHE Long-Life finish

Pure Freude
an Wasser

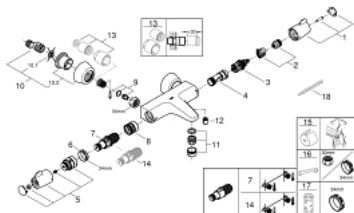


34 665 000 **GROHTHERM SPECIAL BATH SAFETY MIXER**

PRODUCT DESCRIPTION (2/2)

- GROHE SafetyPlus fixed temperature stop

34 665 000 GROHTHERM SPECIAL BATH SAFETY MIXER



SPARE PARTS, July 2015 – now

- 1: Shut-off handle (Spare part-nr. 49004000)
- 2: Stop (Spare part-nr. 47925000)
- 3: Aquadimmer (Spare part-nr. 12433000)
- 4: Water flow (Spare part-nr. 47751000)
- 5: Temperature control handle (Spare part-nr. 49005000)
- 6: Fitting ring (Spare part-nr. 47743000)
- 7: Thermostatic compact cartridge 1/2" (Spare part-nr. 47439000)
- 7: Thermostatic compact cartridge 1/2" (Spare part-nr. 47885000)
- 8: Race (Spare part-nr. 47975000)
- 9: Replacement set for GROHE QuickFix (Spare part-nr. 47979000)
- 10: S-union (Spare part-nr. 12058000)
- 10.1: Seal (Spare part-nr. 0138600M)
- 10.2: Covering escutcheon (Spare part-nr. 45545000)
- 11: Flow straightener (Spare part-nr. 49015000)
- 12: Non-return valve (Spare part-nr. 08565000)
- 13: Extension set 1/2", 30 mm (Spare part-nr. 46238000)*
- 14: GROHE TurboStat cartridge 1/2" (Spare part-nr. 47175000)*
- 15: Temperature unlocking handle (Spare part-nr. 47994000)*
- 16: Special spanner (Spare part-nr. 19377000)*
- 17: Socket Spanner (Spare part-nr. 19332000)*
- 18: Adjusting Thermometer (°C) (Spare part-nr. 19001000)*

* Optional accessories