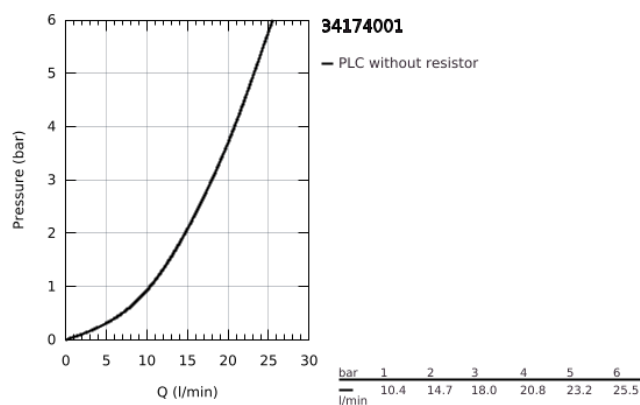
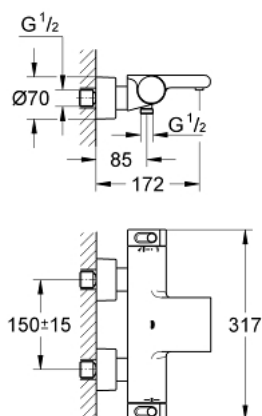


## 34 174 001 GROHTHERM 2000 BATH SAFETY MIXER



### PRODUCT DESCRIPTION (1/2)

- Colour: chrome
- wall mounted
- 100% GROHE CoolTouch safety housing with CoolTouch escutcheons
- GROHE Long-Life finish
- GROHE Aqua Paddle ergonomically shaped handles
- GROHE SafeStop safety button at 38°C
- GROHE SafeStop Plus optional temperature limiter at 43°C included
- GROHE TurboStat compact cartridge
- integrated stop valve
- GROHE AquaDimmer Eco with multiple function:
  - integrated GROHE EcoButton
- flow control
- diverter: bath/shower



Pure Freude  
an Wasser

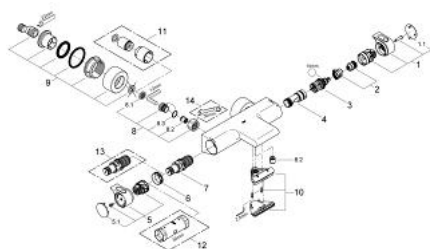


## 34 174 001 **GROHTHERM 2000 BATH SAFETY MIXER**

### **PRODUCT DESCRIPTION** (2/2)

- shower bottom outlet 1/2"
- GROHE XL Waterfall
- built-in non-return valves
- dirt strainers
- covered S-unions, CoolTouch escutcheons with wall sealing
- optional upgrade: GROHE EasyReach shower tray (18 608 001)
- GROHE Water Saving - Less water, perfect flow

## 34 174 001 GROHTHERM 2000 BATH SAFETY MIXER



### SPARE PARTS, February 2012 – now

- 1: Shut-off handle (Spare part-nr. 47923000)
- 1.1: Cover cap (Spare part-nr. 4788300M)
- 2: Stop (Spare part-nr. 47925000)
- 3: Aquadimmer (Spare part-nr. 12433000)
- 4: Water flow (Spare part-nr. 47751000)
- 5: Temperature control handle (Spare part-nr. 47917000)
- 5.1: Cover cap (Spare part-nr. 4788300M)
- 6: Fitting ring (Spare part-nr. 47743000)
- 7: Thermostatic compact cartridge 1/2" (Spare part-nr. 47439000)
- 8: Non-return valve (Spare part-nr. 47189000)
- 8.1: Dirt strainer (Spare part-nr. 0726400M)
- 8.2: Non-return valve (Spare part-nr. 08565000)
- 8.3: O-ring  $\varnothing 17 \times \varnothing 2$  (Spare part-nr. 0305500M)
- 9: S-union (Spare part-nr. 12693000)
- 10: Water flow (Spare part-nr. 47924000)
- 11: Extension set 1/2", 30 mm (Spare part-nr. 46238000)\*
- 12: Socket Spanner (Spare part-nr. 19332000)\*
- 13: GROHE TurboStat cartridge 1/2" (Spare part-nr. 47175000)\*
- 14: Special spanner (Spare part-nr. 19377000)\*

\* Optional accessories