

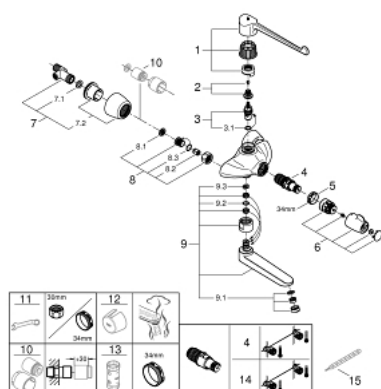
## 34 020 001 GROHTHERM SPECIAL BASIN SAFETY MIXER 1/2"



### PRODUCT DESCRIPTION

- Colour: chrome
- wall mounted
- ergonomic metal lever 250 mm for elbow actuation
- swivel area 100°
- ceramic headpart 1/2"
- GROHE TurboStat compact cartridge
- GROHE SafetyPlus ergonomic metal temperature handle with pre-adjustable safety stop between 35°C and 43°C
- easy thermal disinfection via optional key 47 994 000
- cast spout with reinforced bearing
- swivel area 90°
- laminar flow limiter 9 l/min
- built-in non-return valves and dirt strainers
- projection 255 mm
- covered S-unions
- shut-off position
- GROHE Long-Life finish

## 34 020 001 GROHTHERM SPECIAL BASIN SAFETY MIXER 1/2"



### SPARE PARTS, August 2013 – now

- 1: Lever 250 mm (Spare part-nr. 47410000)
- 2: Replacement handle connection kit (Spare part-nr. 45186000)
- 2.1: O-ring Ø18,2 x Ø1,7 (Spare part-nr. 0392400M)
- 3: Ceramic headpart, 1/2" (Spare part-nr. 45346000)
- 3.1: O-ring Ø18,2 x Ø1,7 (Spare part-nr. 0392400M)
- 4: Thermostatic compact cartridge 1/2" (Spare part-nr. 47885000)
- 5: Fitting ring (Spare part-nr. 47743000)
- 6: Temperature control handle (Spare part-nr. 49072000)
- 7: S-union (Spare part-nr. 12051000)
- 7.1: Seal (Spare part-nr. 0138600M)
- 7.2: Escutcheon (Spare part-nr. 45392000)
- 8: Non-return valve (Spare part-nr. 47189000)
- 8.1: Dirt strainer (Spare part-nr. 0726400M)
- 8.2: Non-return valve (Spare part-nr. 08565000)
- 8.3: O-ring Ø17 x Ø2 (Spare part-nr. 0305500M)
- 9: Cast swivel spout (Spare part-nr. 13138000)
- 9.1: Flow straightener (Spare part-nr. 13960000)
- 9.2: Sealing washer (Spare part-nr. 0128500M)
- 9.3: Stop limiter (Spare part-nr. 0974000M)
- 10: Extension set 1/2", 30 mm (Spare part-nr. 46238000)\*
- 11: Special spanner (Spare part-nr. 19377000)\*
- 12: Temperature unlocking handle (Spare part-nr. 47994000)\*
- 13: Socket Spanner (Spare part-nr. 19332000)\*
- 14: GROHE TurboStat cartridge 1/2" (Spare part-nr. 47175000)\*
- 15: Adjusting Thermometer (°C) (Spare part-nr. 19001000)\*

\* Optional accessories