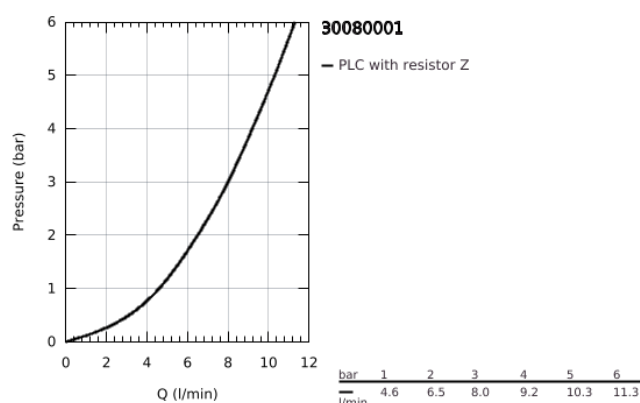
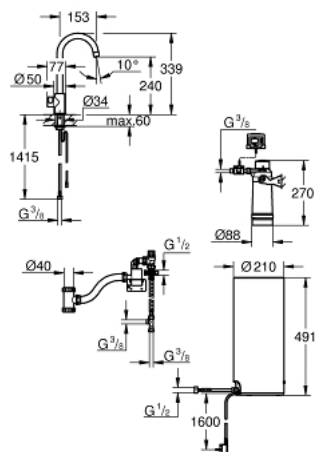


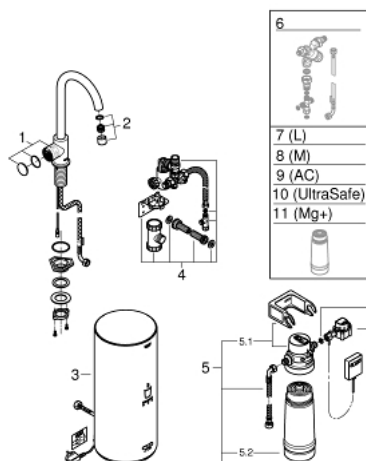
## 30 080 001 GROHE RED MONO PILLAR TAP AND L SIZE BOILER



### PRODUCT DESCRIPTION

- Colour: chrome
- GROHE Red Mono pillar tap
- C-spout
- GROHE ChildLock push buttons for boiling water
- TÜV certified triple electronic safeguards against accidental activation of boiling water
- GROHE Long-Life finish
- insulated tubular spout
- swivel area 150°
- GROHE Red boiler L size
- 5.5 liter 100° C boiling water
- 7 liter total capacity
- required inlet pressure: 1-7 bar
- with flexible connection hose and outlet for boiling water
- CE approved
- power supply 230 V 50 Hz
- power consumption 2100 W
- standby power consumption 15 W
- energy efficiency class A
- GROHE Blue S-Size filter starter set
- for protection of the boiler from limescale
- capacity 600 l at 20° dKH
- flow rate measuring unit

## 30 080 001 GROHE RED MONO PILLAR TAP AND L SIZE BOILER



### SPARE PARTS, August 2013 – now

- 1: Operating unit (Spare part-nr. 46997000)
  - 2: Mousseur (Spare part-nr. 13999000)
  - 3: Boiler Size L (Spare part-nr. 40831001)
  - 4: Safety group (Spare part-nr. 48371000)
  - 5: S-size filter starter set (Spare part-nr. 40438001)
  - 5.1: Filter head (Spare part-nr. 64508001)
  - 5.2: Filter S-Size (Spare part-nr. 40404001)
  - 6: Mixing valve (Spare part-nr. 40841001)\*
  - 7: Filter L-Size (Spare part-nr. 40412001)\*
  - 8: Filter M-Size (Spare part-nr. 40430001)\*
  - 9: Activated carbon filter (Spare part-nr. 40547001)\*
  - 10: UltraSafe filter (Spare part-nr. 40575001)\*
  - 11: Magnesium+ filter (Spare part-nr. 40691001)\*
- \* Optional accessories