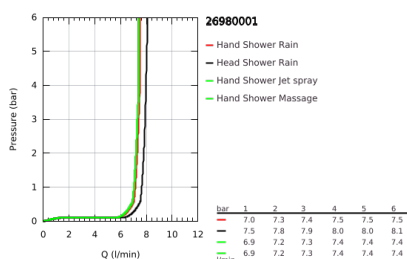
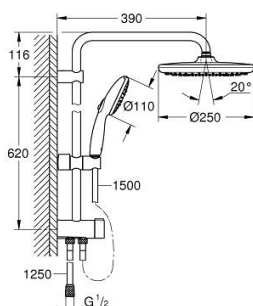


## 26 980 001 TEMPESTA SYSTEM 250 SHOWER SYSTEM WITH DIVERTER FOR WALL MOUNTING



### PRODUCT DESCRIPTION (1/2)

- Colour: chrome
- consisting of:
  - horizontal 390 mm shower arm, adjustable before installation
  - change by diverter between hand shower, head shower or head shower
- Eco setting
- head shower Tempesta 250 (26 666)
- 2 spray patterns (via diverter):
  - Rain, SmartRain
- head shower with white rear cover
- with ball joint
- rotation angle  $\pm 10^\circ$
- hand shower Tempesta 110 (28 419)

- 3 spray patterns:
  - Rain, Jet, Massage
- adjustable in height with gliding element
- distance between diverter and upper bracket: 620 mm
- shower hose Relexaflex 1500 mm (28 151)
- shower hose Relexaflex 1250 mm (28 150)
- flexible installation: connection to faucet / wall union for water supply with 1/2" thread of the 1250 mm shower hose
- maximum flow rate (at 3 bar): 7.9 l/min
- GROHE Water Saving - Less water, perfect flow
- GROHE SmartSwitch - easily rotate the dial to enjoy your preferred spray option
- GROHE DreamSpray perfect spray pattern
- ShockProof silicone ring prevents damages caused by shower falling
- GROHE Long-Life finish
- SpeedClean anti-lime system
- Inner WaterGuide for a longer life

Pure Freude  
an Wasser

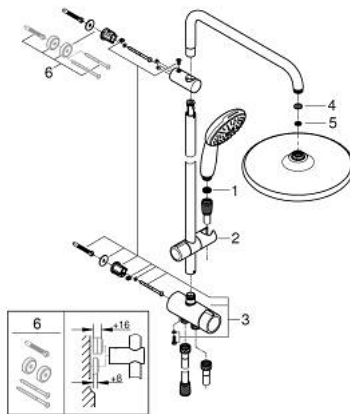


## 26 980 001 **TEMPESTA SYSTEM 250 SHOWER SYSTEM WITH DIVERTER FOR WALL MOUNTING**

### **PRODUCT DESCRIPTION** (2/2)

- suitable for instantaneous heaters from 18 kW/h
- minimum flow rate 7 l/min.
- minimum pressure 1.0 bar
- professional edition

## 26 980 001 **TEMPESTA SYSTEM 250 SHOWER SYSTEM WITH DIVERTER FOR WALL MOUNTING**



### **SPARE PARTS**, November 2021 – now

- 1: Dirt strainer (Spare part-nr. 0700200M)
  - 2: Glider (Spare part-nr. 48609000)
  - 3: Diverter (Spare part-nr. 48338000)
  - 4: Fibre seal dia. Ø18.5 x Ø12 x 2 (Spare part-nr. 0138900M)
  - 5: Dirt strainer (Spare part-nr. 48007000)
  - 6: Compensation disc (Spare part-nr. 26496000)\*
- \* Optional accessories