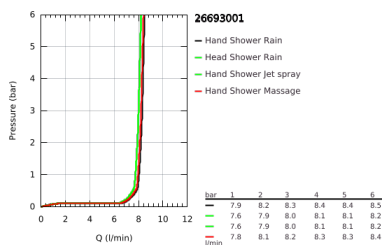
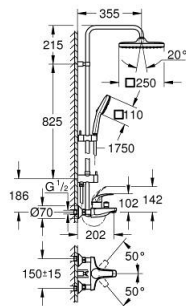


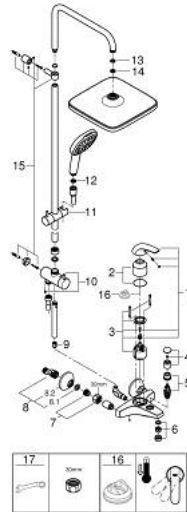
26 693 001 TEMPESTA SYSTEM 250 CUBE SHOWER SYSTEM WITH SINGLE LEVER BATH MIXER FOR WALL MOUNTING



PRODUCT DESCRIPTION

- Colour: chrome
- with short shower rail for installation in showers
- horizontal 355 mm shower arm
- exposed single-lever bath mixer with diverter handle
- head shower Tempesta 250 Cube (26 685)
- spray pattern: Rain
- maximum flow rate (at 3 bar): 8 l/min
- head shower with white rear cover
- bath inlet
- separate diverter for hand shower
- hand shower Tempesta Cube 110 (27 574)
- spray patterns: Rain, Jet, Massage
- maximum flow rate (at 3 bar): 8.3 l/min
- adjustable in height with gliding element
- Rotaflex TwistStop shower hose 1750 mm 1/2" x 1/2" (28 410)
- AquaCalibrator limits maximum flow rate of system (at 3 bar): 8.3 l/min (without bath inlet)
- GROHE EcoJoy - less water, perfect flow
- GROHE SilkMove 46 mm ceramic cartridge
- GROHE SmartSwitch - easily rotate the dial to enjoy your preferred spray option
- GROHE DreamSpray - perfect spray pattern
- ShockProof silicone ring prevents damages caused by shower falling
- GROHE LongLife finish
- GROHE SpeedClean - effortless limescale removal
- Inner WaterGuide - inner insulation for surface protection
- TwistStop - to prevent hose from twisting
- suitable for instantaneous heaters from 18 kW/h
- minimum flow rate 5 l/min.

26 693 001 TEMPESTA SYSTEM 250 CUBE SHOWER SYSTEM WITH SINGLE LEVER BATH MIXER FOR WALL MOUNTING



SPARE PARTS, November 2021 – now

- 1: Lever (Spare part-nr. 46700000)
- 2: Cap (Spare part-nr. 46578000)
- 3: Cartridge (Spare part-nr. 46048000)
- 4: Diverter knob (Spare part-nr. 46571000)
- 5: Diverter (Spare part-nr. 08915000)
- 6: Mousseur (Spare part-nr. 13952000)
- 7: Screw connection 1/2" (Spare part-nr. 45044000)
- 8: S-union (Spare part-nr. 12075000)
- 8.1: Seal (Spare part-nr. 0138600M)
- 8.2: Escutcheon (Spare part-nr. 0221000M)
- 9: Non-return valve (Spare part-nr. 08565000)
- 10: Diverter (Spare part-nr. 46877000)
- 11: Glider (Spare part-nr. 46876000)
- 12: Dirt strainer (Spare part-nr. 0700200M)
- 13: Fibre seal dia. Ø18.5 x Ø12 x 2 (Spare part-nr. 0138900M)
- 14: Dirt strainer (Spare part-nr. 48007000)
- 15: Mounting set (Spare part-nr. 46878000)
- 16: Temperature limiter (Spare part-nr. 46375000)*
- 17: Special spanner (Spare part-nr. 19377000)*

* Optional accessories