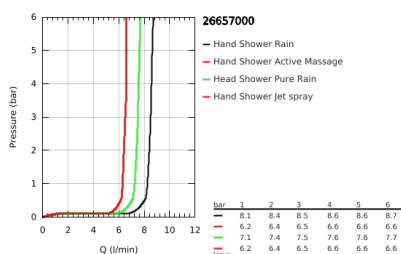


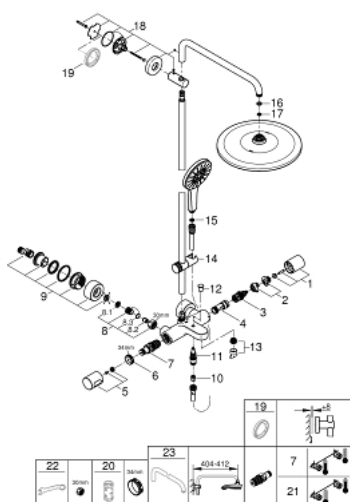
26 657 000 RAINSHOWER SMARTACTIVE 310 SHOWER SYSTEM WITH BATH SAFETY MIXER FOR WALL MOUNTING



PRODUCT DESCRIPTION

- Colour: chrome
- horizontal swivable 450 mm shower arm
- exposed Safety Mixer with Aquadimmer function
- head shower Rainshower Mono 310
- maximum flow rate (at 3 bar): 7.5 l/min
- with ball joint
- bath inlet
- separate diverter for hand shower
- hand shower Rainshower SmartActive 130
- maximum flow rate (at 3 bar): 8.5 l/min
- adjustable in height with gliding element
- Silverflex shower hose 1750 mm
- GROHE TurboStat compact cartridge
- GROHE Water Saving - Less water, perfect flow
- GROHE SafeStop safety button at 38°C
- GROHE SafeStop Plus optional temperature limiter at 43°C included
- GROHE CoolTouch no risk of scalding
- GROHE DreamSpray perfect spray pattern
- GROHE SmartTip showering spray selection via push of a ring
- GROHE Long-Life finish
- GROHE FastFixation upper bracket adjustable
- SpeedClean anti-lime system
- Inner WaterGuide for a longer life
- minimum flow rate 7 l/min.

26 657 000 RAINSHOWER SMARTACTIVE 310 SHOWER SYSTEM WITH BATH SAFETY MIXER FOR WALL MOUNTING



SPARE PARTS, August 2018 – March 2021

- 1: Aquadimmer handle (Spare part-nr. 47804000)
- 2: Stop (Spare part-nr. 47723000)
- 3: Aquadimmer (Spare part-nr. 12433000)
- 4: Water flow (Spare part-nr. 47751000)
- 5: Temperature scale handle (Spare part-nr. 47811000)
- 6: Fitting ring (Spare part-nr. 47743000)
- 7: Thermostatic compact cartridge 1/2" (Spare part-nr. 47439000)
- 8: Non-return valve (Spare part-nr. 47189000)
- 8.1: Dirt strainer (Spare part-nr. 0726400M)
- 8.2: Non-return valve (Spare part-nr. 08565000)
- 8.3: O-ring $\varnothing 17 \times \varnothing 2$ (Spare part-nr. 0305500M)
- 9: S-union (Spare part-nr. 12693000)
- 10: Non-return valve (Spare part-nr. 08565000)
- 11: Diverter (Spare part-nr. 65655000)
- 12: Diverter knob (Spare part-nr. 65648000)
- 13: Mousseur (Spare part-nr. 13926000)
- 14: Glider (Spare part-nr. 48424000)
- 15: Dirt strainer (Spare part-nr. 0700200M)
- 16: Fibre seal dia. $\varnothing 18.5 \times \varnothing 12 \times 2$ (Spare part-nr. 0138900M)
- 17: Dirt strainer (Spare part-nr. 48007000)
- 18: Shower bar holder (Spare part-nr. 48279000)
- 19: Compensation disc (Spare part-nr. 27180000)*
- 20: Socket Spanner (Spare part-nr. 19332000)*
- 21: GROHE TurboStat cartridge 1/2" (Spare part-nr. 47175000)*
- 22: Special spanner (Spare part-nr. 19377000)*
- 23: Shower arm for shower systems (Spare part-nr. 14047000)*

* Optional accessories