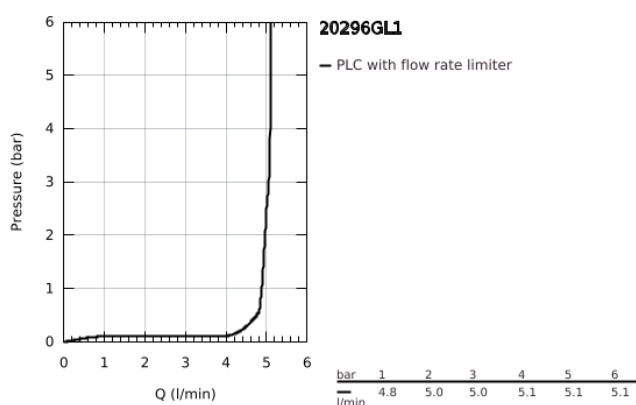
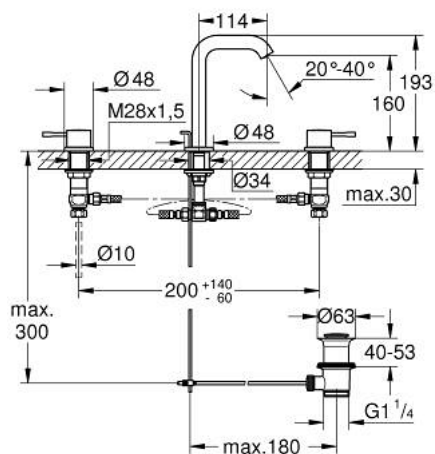


20 296 GL1 ESSENCE 3-HOLE BASIN MIXER 1/2" M-SIZE



PRODUCT DESCRIPTION

- Colour: cool sunrise
- ceramic headparts 1/2", 90°
- GROHE Long-Life finish
- GROHE Water Saving - Less water, perfect flow
- GROHE Water Saving mousseur 5.7 l/min
- GROHE AquaGuide adjustable mousseur
- pop-up waste set 1 1/4"
- flexible connection hoses between spout and side valves



20 296 GL1 ESSENCE 3-HOLE BASIN MIXER 1/2" M-SIZE



SPARE PARTS, August 2023 – now

- 1: Essence pair of handles (Spare part-nr. 48330GL0)
- 2: Ceramic headpart, 1/2" (Spare part-nr. 45882000)
- 2.1: O-ring Ø18,2 x Ø1,7 (Spare part-nr. 0392400M)
- 3: Ceramic headpart, 1/2" (Spare part-nr. 45883000)
- 3.1: O-ring Ø18,2 x Ø1,7 (Spare part-nr. 0392400M)
- 4: Pop-up rod (Spare part-nr. 65196GL0)
- 5: Mousseur (Spare part-nr. 48270000)
- 6: Fixing clamp (Spare part-nr. 6554100M)
- 7: Waste set 1 1/4" (Spare part-nr. 28910GL0)
- 7.1: Plug (Spare part-nr. 07182GL0)
- 7.2: Eccentric rod (Spare part-nr. 07052000)
- 8: Coupling nut 1/2" (Spare part-nr. 1290100M)
- 8.1: Fibre seal dia. Ø18.5 x Ø12 x 2 (Spare part-nr. 0138900M)
- 9: Flexible connection hose (Spare part-nr. 45704000)
- 10: Eccentric rod (Spare part-nr. 07341000)*

* Optional accessories