

19 807 001 **COSTA L CONCEALED VALVE EXPOSED PART**

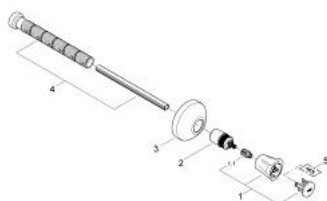


PRODUCT DESCRIPTION

- Colour: chrome
- final installation for
 - 35 028 000
 - for concealed valves 29 800 1/2", 29 802 3/4", 29 805 1"
 - installation depth infinitely adjustable
 - 20 - 200 mm
 - escutcheon with wall sealing
 - screwable
 - metal handle
 - heat insulated
 - marking: red
 - GROHE Long-Life finish



19 807 001 **COSTA L CONCEALED VALVE EXPOSED PART**



SPARE PARTS, June 2007 – now

- 1: Handle (Spare part-nr. 45994000)
- 1.1: Snap insert (Spare part-nr. 0538600M)
- 2: Extension for spindle (Spare part-nr. 45204000)
- 3: Escutcheon (Spare part-nr. 45219000)
- 4: Extension-set 200 mm (Spare part-nr. 45203000)
- 5: Screw for Costa/Avina products (Spare part-nr. 48013000)*

* Optional accessories