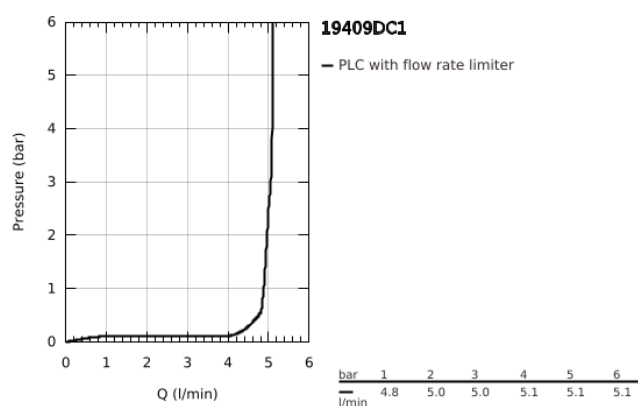


19 409 DC1 LINEARE 2-HOLE BASIN MIXER M-SIZE

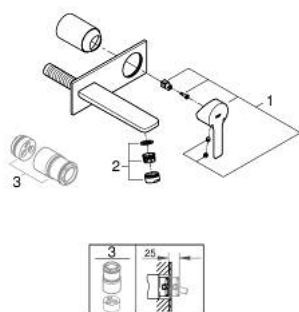


PRODUCT DESCRIPTION

- Colour: supersteel
- wall mounted
- final installation for
 - 23 571 000 / 32 635 000
 - without concealed body
 - metal rosette
 - GROHE Long-Life finish
 - GROHE Water Saving - Less water, perfect flow
 - maximum flow rate (at 3 bar): 5 l/min
 - GROHE AquaGuide adjustable mousseur
 - centre distance 110 mm
 - projection 149 mm



19 409 DC1 **LINEARE 2-HOLE BASIN MIXER**
M-SIZE



SPARE PARTS, September 2016 – now

1: Lever (Spare part-nr. 46982DC0)

2: Flow straightener (Spare part-nr. 46837DC0)

3: Extension (Spare part-nr. 46943000)*

* Optional accessories